

General Examination Camera AMD-2500

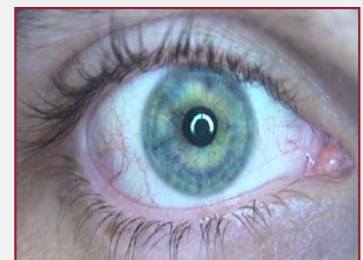


Let the Doctor "See" the Patient Exactly as They Are

The *General Examination Camera* enables healthcare professionals to assess a patient from an entirely remote location. This multi-purpose examination camera was developed specifically for telemedicine applications to capture and display high resolution video and images of a patient encounter. With only 4 buttons to keep things simple, this is the first camera to combine power zoom, auto or manual focus, frame capture and electronic image polarization into one small, single-hand operated camera.



Captures Superior Quality Medical Images



Eye



Skin



Mouth

Product Features:

- Power zoom push-button (1-50x zoom) allows both close focus and wide angle video.
- Auto focus makes it quick and easy to get a clear picture.
- Integrated freeze frame instantly captures an image without the use of a keyboard or mouse.
- One-button white balance ensures accurate colors are captured during patient exam.
- Polarization eliminates surface skin reflection and allows camera to see further into epidermal layers.
- Manual or automatic iris control maximizes image brightness.
- Light that surrounds the lens helps provide balanced lighting across the subject area.



Technical Specifications:

Dimensions: 2.2" (w) x 3.7" (d) x 2.9" (h) / (5.59 cm x 9.40 cm x 7.37 cm)

Weight: 0.5 lbs. (226 g)

Magnification: auto power zoom from 1-50x

Polarization: push-button

Zoom: push-button

Signal to Noise Ratio: greater than 48dB

Output Signal: Composite and S-Video and USB 2.0 with AMD provided adapter

Output Format: NTSC/PAL

Integrated Freeze-frame: push-button

Color Adjustments: auto white balance

ACC: full iris control

Lighting: fluorescent

Operating Conditions Temperature Range: 32° F to 104° F (0° C to 40° C)

Operating Humidity: Less than 90%

Power Consumption: 5W

Voltage Range: 110/220 VAC 10%, 50/60 Hz, or 12 VDC

Lens: General purpose lens close focus, 50x polarized lens, and optional 100x polarized contact lens

Optional Accessories:

- Contact 100x polarized lens
- Retractable Camera Reel
- Tripod
- Disposable tip covers for 50x lens
- Camera Table Mount

Top Rated Patient Exam Camera for Ease-of-Use and Overall Score

Device	Composite Score (average)
AMD-2500	4.07
GlobalMedia TotalExam	3.52
Canon Vixia HFM31	2.94
Insignia 720PHD	2.56
Panasonic HDC-TM700	3.09
Panasonic DMC-ZS3	3.10
Sony DCR-TRV38	3.13
Sony DCR-HC40	3.25

Results provided by TTAC

Note: The composite scores for these devices are an average for the scores for color, detail, mechanics, and ease-of-use.



AMD Global Telemedicine
 321 Billerica Road
 Chelmsford, MA 01824
 Toll-Free: 1-866-449-8210
 info@amdtelemedicine.com
 www.amdtelemedicine.com